



UW-MADISON EXTENSION
Waupaca County

4-H FORECAST

February / March 2025

WELCOME to the 91 new 4-H members in Waupaca County 4-H and welcome back to the returning 4-H members! We look forward to a great year of 4-H opportunities and experiences. I encourage everybody, returning members and new members, to ask questions, try new things, set goals for yourself, make new friends, work together, learn, and have fun.

ELECTIONS FOR THE 4-H LEADERS' BOARD will be held at the March Association meeting, March 25. Interested youth and adult volunteers should contact a current board member or the Extension Office. The positions the board is looking to fill are Vice President, District Representatives, secretary, and 2 Youth Representatives (grade 7 and above).

Reasons to be a part of the 4-H Leaders' Board

- Learn about other 4-H clubs in the county and how they work.
- Work closely with other youth and adult leaders who are committed to making the Waupaca County 4-H Program the best it can be.
- Get the scoop on the latest 4-H opportunities and news.
- Ensure funds are budgeted for items most important to the membership.

The Extension Office is moving!! Throughout February, we will be moving to a temporary (2 years) location while the Courthouse in Waupaca is fully remodeled.



Our new office is located at 111 W North Water Street, New London, WI 54961. We will continue to update you on changes to mailing, phone lines, and more. The best practice right now is to call before visiting the office in Waupaca or to email penny.tank@wisc.edu and haley.nelson@wisc.edu

4-H Speaking and Demonstration Contest

The Speaking and Demonstration Contest will be back at the county level. Mark your calendars for Tuesday, April 8 at 6:30 p.m. at the Lebanon Town Hall. This is for all ages and you can do poetry, prepared speech, storytelling, and more in the speaking contest. For the demonstration contest, consider the 4-H projects you are enrolled in, what would you want to teach others? Register by March 24.

4-H SPEAKING & DEMONSTRATION CONTEST



- SHARE WHAT YOU KNOW
- DEVELOP SPEAKING PROFICIENCY
- LEARN NEW THINGS FROM OTHERS
- SPEAK INDIVIDUALLY OR AS A TEAM

TUESDAY, APRIL 8TH

6:30 P.M.

LEBANON TOWN HALL

N5844 BUELOW RD, NEW LONDON



REGISTER VIA THIS LINK OR THE QR CODE BY MARCH 24, 2025

bit.ly/2025SpeakingandDemoContest

4-H New Family Orientation

All new families are invited to attend New Family Orientation on Tuesday, February 25 at 6:15 p.m. at the Manawa Elementary School, 800 Beech Street, Manawa. Please Register by February 21. <https://bit.ly/4-HNewFamilyNight> There will also be games or a craft for children.

4-H New Family Night

Topics to Discuss:

- Overview of the Waupaca County 4-H program
- Difference between county and club activities
- Member and leader opportunities
- Basics of a club meeting
- Introduction to 4-H record books
- Brief discussion about County Fair
- Other helpful hints

Come ask questions and meet other families!

Where: Manawa Elementary School, 800 Beech St.

When: Tuesday, February 25th from 6:15-7:30 p.m.

Who: New 4-H members of all ages and their families



Please register via these links by February 21st:
<https://bit.ly/4-HNewFamilyNight>

If special accommodations are necessary for your attendance at this event, please contact county clerk (waupaca) or call (715) 250-8230 to make arrangements. An EEO/AA employer, University of Wisconsin-Madison Division of Extension provides equal opportunities in employment and programming, including Title VI, Title IX, the Americans with Disabilities Act (ADA) and Section 504 of the Rehabilitation Act requirements.

Super Saturday will be held on March 29, 2025 at the **High** School in Manawa. Super Saturday is a project exploration event where members, leaders, and parents can sign up for a variety of sessions. Registrations will be mailed and emailed to all families soon.



2025 Waupaca County Fair Dates: While planning for 2025, please note the Waupaca County Fair dates are August 20-24. Check out the Waupaca County Fair website at <https://waupacacountyfair.org/> for more information.

New enrollments after February 1

Youth can enroll in 4-H anytime, however new 4-H members who join after the February 1st new enrollment deadline cannot exhibit in the junior fair under 4-H for the current year.

Changing and adding project areas

Members are able to change projects they enroll in until April 1, 2025 if a project area is forgotten or you want to add or delete after the November 15 re-enrollment deadline. The project areas you are enrolled in are the areas where members will be able to enter exhibits in the junior fair next summer. Contact Penny at penny.tank@wisc.edu to make any changes for you. After April 1, no project areas can be added or changed.

Needs Based Scholarships: If families have difficulty paying for 4-H events, program fees, etc. at any time of the year they should reach out to the Waupaca County 4-H Program Educator, Penny Tank, at penny.tank@wisc.edu or 715-258-6230 to discuss the availability of needs based scholarships. Requests will be kept confidential.

4-H Forecast

The 4-H Forecast is a bi-monthly newsletter that is emailed and mailed to all registered 4-H families. It contains information about upcoming workshops, programs, contests, and registration information. Please read each issue and make note of events your family is interested in. The 4-H Forecast can also be found online at <https://waupaca.extension.wisc.edu/4-h-youth-development/4-h-program-topics/4-h-newsletters/>

Each *4-H Forecast* includes county and state level 4-H opportunities and deadlines. These are in addition to your own club's meetings. You are expected to attend 4-H club meetings; however, you are invited to take part in as many county activities as your family schedule will allow. **Enclosed is a 2025 Waupaca County 4-H Calendar.**

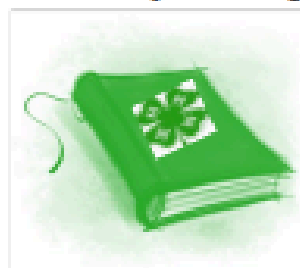
Please honor the deadlines listed. They are established so planning committees can prepare for you. If we do not know you are coming, we can not buy supplies for you, send you more information you may need, or events could be cancelled due to low registration. If you need more information about any of the items in the Forecast or about 4-H, email penny.tank@wisc.edu. You can also find more at <https://waupaca.extension.wisc.edu/> and Facebook Waupaca County 4-H.

Record Book Pages

With the Extension Office move, record book pages will be updated and available in March. Record book pages will again be available as fillable forms online or printed for anybody that requests printed pages.

For members, record books are a valuable part of the 4-H experience. They are intended to help you develop lifelong skills such as:

- ⇒ Setting goals
- ⇒ Planning and organizing
- ⇒ Communicating in writing
- ⇒ Evaluating effort and progress



Once completed, you have a valuable record of accomplishments that can be used when applying for awards, scholarships, college or a job! Remember to begin saving information for your record books throughout the year and to start filling out the record book pages early. Refer to the guidelines you receive with the record book pages for details about completing your record book.



VOLUNTEER LEADER NEWS

Club and/or Project Printouts

If you need any reports run for your club or a specific project area the Extension Office will gladly print them by request. Please look these reports over as soon as you receive them and get back to us with discrepancies. It's much easier to fix now than when fair entries are due!



What is Expected of 4-H Project Leaders?

- ◆ First, make sure you're an approved 4-H leader!
- ◆ Get started now. Member enthusiasm for a project is highest at the time of enrollment. Find out who is enrolled in the project and set up your meeting now.
- ◆ At one of the first meetings of the year, help members set their goals for the project. Be sure members bring their 4-H member's record sheet with them to the meeting.
- ◆ Help members keep a record of what they did or made in the project for the year.
- ◆ Review progress toward the year's goals at your final meeting of the year.
- ◆ Try to organize and conduct at least three project meetings per year. Remember project tours or smaller work sessions can be offered to members in addition to group meetings.
- ◆ Involve youth leaders in meaningful ways. They are capable of helping in planning and teaching—not just being the helper or the clean up crew!
- ◆ Set an example in being prepared, organized, and flexible in working with youth.
- ◆ Seek out additional resources for project meetings.
- ◆ Keep your club's General Leader informed about meetings and other announcements.

LEADERS' BOARD AND ASSOCIATION

The next Leaders' Board Meeting will be on Thursday, March 13 at 6:30 p.m., Manawa City Hall. The next Leaders' Association Meeting will be Tuesday, March 25 at 7:00 p.m., Manawa City Hall. Clubs in District V (Tri-County, Sandy Knoll, and Wolf River Rascals) are asked to report and share a light snack.

Elections in March

4-H Leaders' Board Members Needed

Youth and Adult Positions Available!

**Meet 6x per year *Learn together*

**Great Opportunities *Have fun & Do good*

All 4-H leaders are encouraged to attend!

Plan to attend, vote on issues and be informed, have fun!



General Leader Meeting

There will be a general leader meeting on Tuesday, March 25 beginning at 5:45 p.m., prior to the 4-H Leaders' Association meeting (7:00 p.m.). All General Leaders, or a representative from each club, are asked to attend the meeting. This is a great opportunity to talk with other leaders about a variety of topics. Penny will also present about results from the Youth Thrive Survey and how youth feel about components of our local program.

MEMBER OPPORTUNITIES

4-H Summer Camp—Join Waupaca, Portage, and Iowa Counties for Summer Camp, June 23-25, 2025. Registration will open March 1 in 4-H online. Summer Camp is for youth in grades 3-7. Adult volunteers are also needed.



Wildlife & Woods Virtual Sessions

Wisconsin 4-H is excited to offer two Wildlife & Woods virtual series again in 2025 - Explorations and Careers & Competitions!

Wildlife & Woods Explorations are suggested for grades K-5 through elementary school youth and their families. The sessions

will be interactive and will include wildlife, forestry, wildlife art and more.



Wildlife & Woods
EXPLORATIONS VIRTUAL SERIES

Register via
4HOnline
wi.4honline.com

FREE SERIES: FOR YOUTH GRADES K-5
7:00PM-7:45PM

JAN. 29, 2025
FEB. 26, 2025
MAR. 26, 2025
APRIL 23, 2025

To learn more about virtual learning opportunities, please visit 4h.extension.wisc.edu/vlc

An EEO/AAE employer, University of Wisconsin-Madison Division of Extension provides equal opportunities in employment and programming, including Title VI, Title IX, the Americans with Disabilities Act (ADA) and Section 504 of the Rehabilitation Act requirements.

Wildlife & Woods Careers & Competitions Series

are suggested for middle school through high school youth and their families. The sessions will be

interactive and will include guest speakers talking about careers,

information about wildlife and forestry competitions and resources available to learn more.

Registration for these events is now open in 4HOnline!



Wildlife & Woods
CAREERS & COMPETITION VIRTUAL SERIES

Register via
4HOnline
wi.4honline.com

FREE SERIES: FOR YOUTH GRADES 4-12
7:00PM-7:45PM

JAN. 27, 2025
FEB. 24, 2025
MAR. 24, 2025
APRIL 28, 2025

To learn more about virtual learning opportunities, please visit 4h.extension.wisc.edu/vlc

An EEO/AAE employer, University of Wisconsin-Madison Division of Extension provides equal opportunities in employment and programming, including Title VI, Title IX, the Americans with Disabilities Act (ADA) and Section 504 of the Rehabilitation Act requirements.

Open Enrollment Summer Camp is Back at Upham Woods!

Registration will open March 3.

Traditional Camp:

Who: Any youth entering 4th-8th grade for the 2025-2026 school year.

When: August 16-19, 2025

Registration Fee: \$315

[View last year's schedule here!](#) This year's schedule will have some changes to make camp exciting for returning youth but many camp favorites like swimming and water carnival will remain the same!

Outpost Camp:

Who: Any youth entering 8th-10th grade for the 2025-2026 school year.

When: July 19-22, 2025

Registration Fee: \$335

Outpost Camp is an exciting introductory camp experience where youth spend time

canoeing and camping. The camp will spend the first night at Upham Woods as everyone learns the basics of camping, cooking outside and canoe safety before we head out as a group to paddle the Wisconsin River and spend the next 2 nights camping on Blackhawk Island. Note: Blackhawk Island is a rustic camping experience with no running water or flush toilets.



Wisconsin State Fair

If you are interested in exhibiting at the Wisconsin State Fair, July 30—August 10, you will want to follow the State Fair news and website for competitions <https://wistatefair.com/competitions/>

4-H PROJECTS

Dog project start up meeting

The first project meeting is coming up on **March 24** at 6:30 p.m. at Manawa Elementary School. More details will be mailed to dog project members. If you are on Facebook, ask to join the

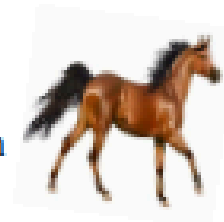
Waupaca County 4-H Dog Project page.

Rabbit Hopping Informational Newsletter

Rabbit hopping (described similar to dog agility) has been a project for 2 years. Colleen, the volunteer who leads this project, has created an informational newsletter, which will be mailed to all families in rabbit hopping. The first practice will be Sunday, May 18 at the Fairgrounds. If you are at all interested in learning more about rabbit hopping and are not enrolled in the project, contact penny.tank@wisc.edu .

Horse Project

Mark your calendars for the next countywide horse project meetings on Monday, February 24 and March 31, at the Manawa Elementary School. Please follow the group on Facebook at Waupaca County Horse and Pony Project for project updates and info.



4-H Horse Association Handbook

The 4-H Horse Association Handbook has now been updated for 2025! The Horse Handbook is located at <https://4h.extension.wisc.edu/opportunities/projects/large-animals/horse-project/wisconsin-4-h-horse-association/> This is where you find information about state horse events and more.

4-H Shooting Sports

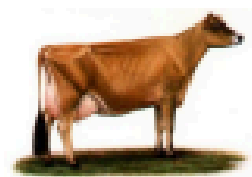
All youth registered in shooting sports **MUST** work with **A STATE 4-H CERTIFIED SHOOTING SPORTS LEADER.** **2025 Adult Certification Workshops**—Check out the Wisconsin 4-H website for more information: <https://4h.extension.wisc.edu/opportunities/projects/shooting-sports/leader-certification-training-workshops/>

2025 Competitive Shoots—For more information go to: <https://4h.extension.wisc.edu/opportunities/projects/shooting-sports/competitive-shoots/> Competitive Shoots start in March. Watch for registration information online if interested.

If you would like information about the Shawano County 4-H archery practices held near Clintonville contact Penny Tank.

Waupaca County Dairy Judging

Dairy judging is an excellent opportunity to increase your knowledge of dairy cattle and practice life skills such as communication, critical thinking, and decision making. Members have the opportunity to participate locally in practice sessions and then compete at Area Animal Science Day. Please contact Penny at the Extension office to let us know of your interest in participating in Dairy Judging and your availability or suggestions for practices.



Crowley 4-H Dairy Leadership Award

The James W Crowley 4-H Dairy Leadership Award program provides recognition to youth who have excelled in their dairy project. The award named in honor and memory of James W. Crowley, longtime Extension Dairy Specialist and strong supporter of dairy youth projects. A special engraved medallion will be presented to the outstanding 4-H dairy project member in each county for their accomplishments in 2024. County Award winners are eligible to compete for 15 state-wide awards. State winners will receive plaques and the top three youth in the state competition will each receive \$1,000 awards. Eligibility: 1)Must be currently enrolled in the 4-H Dairy Project and have at least two previous years of membership in it. 2)Must be in 10th-13th grades as of January 1. 3)Should have an outstanding record of involvement and accomplishments in the 4-H Dairy Project. Contact Penny at the Extension office for an application which is due by **April 1**. A county winner will then be selected and forwarded to the state.

LARGE MARKET ANIMAL

Large Market Animal Update

As a reminder, the Large Market Animal Committee is their own 501c3 organization. The website that contains all of the information for large market is:

<https://waupacacountylargemarketsale.my.canva.site>

Large Market Animal Committee Scholarship

The 2025 Large Market Animal Committee Scholarship can be found at: <https://waupacacountylargemarketsale.my.canva.site> All

scholarship information is found under the scholarship tab. Large Market Scholarship due March 15.

**Youth for the Quality
Care of Animals
(YQCA) Update**



It is required that all food animal project youth (beef, sheep, swine) complete a YQCA course (either online or in person). YQCA also counts as an educational point for small market animal sale participants (rabbit, poultry, goat). The YQCA website is <https://yqcaprogram.org/>.

Online completion is always an option and costs \$12. This year there will be 2 in person options to complete YQCA:

1. Saturday, March 29 immediately following Super Saturday project day at Manawa Elementary School. Youth can start arriving at 12:30 and the class will start at 12:45. Youth MUST register through the YQCA website above, NOT on the Super Saturday registration form.
2. During the summer Large Market Animal Educational Day.

For either class you need to register at <https://yqcaprogram.org/> And pay the \$3.00 fee online for the instructor led course.

**SMALL MARKET ANIMAL SALE
(Rabbit, Poultry, Goat)**

The Small Market Animal sale is voluntary, but members or a family member/ guardian representative **MUST** sign up to sell an animal in the Small Market Animal Sale by attending one of the meetings below.

MANDATORY MEETINGS will be held in two places.

- ◆ **Thursday, March 6, 2025**, City Hall, Main St, Weyauwega
- ◆ **Monday, March 10, 2025**, at the Manawa City Hall

Meetings will start at **6:30 p.m.**

A zoom option will be available if requested (not recorded) for the March 6 meeting only. If you need to participate by zoom, you need to notify penny.tank@wisc.edu by 3 p.m. on March 6.

AGRICULTURE PROJECT CONTESTS/STARTER PROGRAMS

2025 Targhee Sheep Association Starter Flock

The U.S. Targhee Sheep Association (USTSA) will again, be offering a free registered Targhee Starter flock to a deserving youth at the 2025 USTSA National Show and Sale, held July 17-19, 2025, in Montana. The winner must be present to receive the flock and will be awarded one (1) ewe lamb, one (1) yearling ewe, and one (1) brood ewe donated by members of the USTSA. The winner will also receive a \$150 credit for use toward purchase of additional animals at the national sale. Applications, due March 1st, are now available <https://www.targheeshsheepus.com/>. Any young person, ages 9-17, as of January 1, 2025, whose family does not raise Targhee sheep may apply.

Wisconsin Dairy Goat Association Share-a-Kid Contest

The contest is open to Wisconsin youth ages 10-17 by January of this year to enter. Entries are accepted Jan.1st until March 15 of 2025. The youth write an essay about why they would like a goat and how they are going to take care of her and complete an application. They give away 4-6 goats per year. Complete contest details can be found at the following link: <https://www.wdga.org/out-and-about/> deadline is March 15.



CLUB HAPPENINGS

Friendly Valley– A Christmas party was held that included bowling. Members also collected canned goods for the food pantry.

Lebanon Cedars– Members held a club potluck, attended a floral arrangement workshop, and made holiday gift baskets for assisted living residents.

Norseman– They handed out treat bags during the lola Christmas parade. Club members are also making plans for future fundraisers/community service projects.

Sandy Knoll– Club members enjoyed a holiday party that

included singing carols and gift exchange. Members also wrapped gifts for their adopted family and worked on other service projects.

Tri-County– Members held an ornament exchange and did some cookie decorating. They made Christmas cards for Weyauwega Health Care Center and are planning a soup luncheon.

Wolf River Rascals - Members each completed a ceramic project and the club enjoyed sledding.

Woodland Badgers– The club participated in Clintonville Christmas parade, held a holiday party and made cards for Green Tree residents.

Secretaries Report

Please remember part of the secretary officer duties, besides keeping accurate records of club business, is to turn a copy of the minutes into the Extension Office. This can be done by mail or email: penny.tank@wisc.edu. The club minutes are important for 4-H records and highlights from the minutes are also shared in each 4-H Forecast.

THANK YOU

- Dog, horse, large market and small market committee volunteers that have been meeting and planning these countywide projects and educational opportunities.
- Dorothy Paider and Deb Schneider for conducting Ambassador interviews.
- Waupaca Public Library for hosting the 4-H Open House.
- Bella, Hailey, Abbey, Macey, Brooklyn, August, Angelica, Deb, Breann, Janet, Elizabeth, and Jan for helping with booths and activities at the Open House

CONGRATULATIONS

- Violet Horton, Bella Havlik, Grant Knoespel, Greta Huettl, Ella Marquardt, Aubrey Bruette, and Hailey Burmeister on becoming new 4-H Ambassadors



Annual Waupaca County 4-H Lego Contest

See the flier for more information.

Entries due by April 5.

5th Annual 4-H Lego Contest

Divisions:

Clayverbud:

– Kindergarten through 2nd grade

Junior:

– 3rd through 5th grade

Intermediate:

– 6th through 8th grade

Senior:

– 9th grade or older

Non 4-H Member:

– All ages

Prizes:

- Entries will be judged by the 4-H Ambassadors after April 5, and prizes will be awarded for the top in each age division and category. All participants will also be entered in a random drawing for a gift card.

Questions:

Contact Penny Tank
penny.tank@wisc.edu

Extension Waupaca County
Courthouse, 811 Harding Street
Waupaca, WI 54981
Phone: 715-258-6210



Do you enjoy creating with Legos? Youth of all ages will be able to use their design and building skills for this countywide Lego Contest. It is also a good way to practice fine motor skills!

- Entries are due April 5, 2025 (an entry consists of completing the google form linked below and submitting up to 3 photos of the Lego build)
- Photos should be close up of the build (2 different views) and a photo of the youth with their finished piece, etc. If you are not able to upload them in the google form, please email to penny.tank@wisc.edu
- One entry per youth.
- There are age divisions listed to the left and the categories within each are:
 - House or Building
 - Transportation (car, train, airplane, boat, etc.)
 - Themed build - character pieces such as Harry Potter, Minecraft, Batman, etc.
 - Original Build (not from a kit)
 - Other
- Youth are encouraged to be as creative as possible and kits are allowed. Use what you have, no need to purchase anything.
- On the entry form, participants are asked to share a few sentences about their build - how long did it take, was it a kit, were some parts really challenging, why did you build this piece, etc?
- Entries will be judged based on the photos and areas such as:
 - Difficulty (grade level taken into account)
 - Information shared by the member
 - Appearance
 - Creativity

Click on the below link or scan the QR code to enter by
April 5, 2025

bit.ly/LegoContest2025Entry





Presented by: Milksource

Presented by: Robinson

June 6th // 7:05pm // DAIRY NIGHT

MOO-ve on over to the Resch Center and kick-off Dairy Month in style with Green Bay Blizzard Indoor Football as they look

**to put the Barnstormers on ICE!
Hard-Hitting, Affordable, Family-Fun**

EXCLUSIVE 4H or FFA club specials:

"Steer" clear of normal tickets price with a special BOGO = Two Tickets for \$20!

- Fundraise for your club – with each \$20 two pack purchased on your link – a \$5 donation will be made back to your club.
- Custom ticket link provided for your group.
- Cow and Calves – pre-game.
- Special pre-game experience for 4H and FFA Groups
- Exclusive opportunity for 4H and FFA Groups to compete at half-time **SPACE IS LIMITED so RSVP - ASAP!**
- Special Jersey, Special Game Ball And more. . . It will be "udder" chaos!

#GoBlizz

**Get off your "Dairy"- ere
and get your group signed up!
FOR MORE INFORMATION & TO REGISTER:
Email: cass@greenbayblizzard.com**



Essay Contest



A WISCONSIN TREE AND ME: HOW TREES GROW FOOD & FIBER

Entries Due Online by

April 15, 2025

★ PRIZES ★

State Winner

- \$250 Cash Prize
- Award ceremony with the Department of Agriculture, Trade, and Consumer Protection Board
- Essay displayed at the Farm Wisconsin Discovery Center

District Winners

- Medal & Prize Pack

Winners in EACH grade division

Wisconsin 4th & 5th graders:
Create an original essay for a chance to win!

Inspired by the
2024 Book of the Year



Learn More

bit.ly/wiagessaycontest

Program made possible by leading partners:



COMPEER
FINANCIAL

WAUPACA COUNTY 4-H INVITES 4-H AND NON 4-H MEMBERS

BUTTERFLY CAKE

Supplies Include

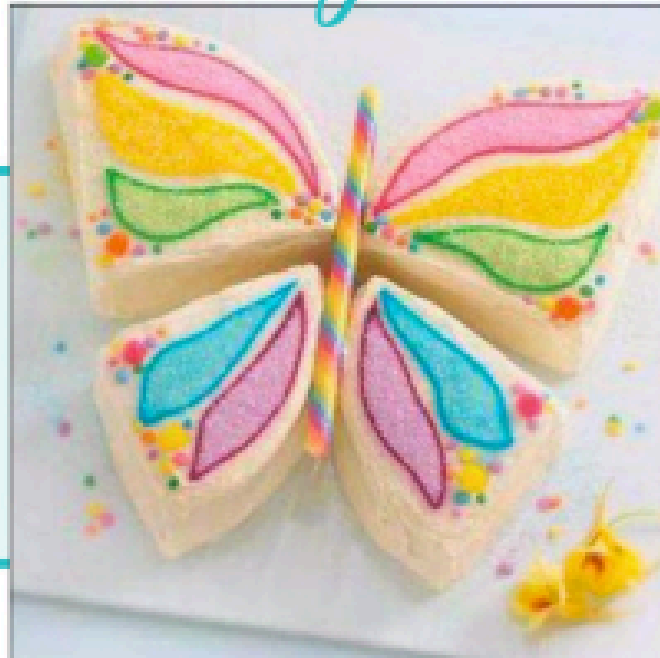
- Cake mix
- White frosting
- Candy Stick
- Writing Gel
- Candy Decorations

Project Kits

MARCH 18
6:30 PM | ZOOM

Bake your cake then join us via Zoom to assemble and decorate together!

(If kits run out, you are still invited to participate in the zoom)



FREE



One kit per family
25 kits available

REGISTRATION DUE FEBRUARY 26

Register via link or scan QR Code:

<https://forms.gle/sXmFL9tzaVEQRauk6>

An EEO/AA employer, University of Wisconsin-Madison Division of Extension provides equal opportunities in employment and programming, including Title VI, Title IX, the Americans with Disabilities Act (ADA) and Section 504 of the Rehabilitation Act requirements.





4-H Forecasts are posted on our website or scan the QR Code

<https://waupaca.extension.wisc.edu/4-h-youth-development/4-h-program-topics/4-h-newsletters/>



State 4-H Website

Please take a few minutes to check out the updated state 4-H website for a number of resources and information. The web address is <https://4h.extension.wisc.edu/>



Waupaca County 4-H Facebook Page

<https://www.facebook.com/Waupaca-County-4-H-497545503725584>

Extension Waupaca County Facebook Page

<https://www.facebook.com/WaupacaCountyUWEX/>



UW-MADISON EXTENSION

EXTENSION WAUPACA COUNTY STAFF

811 Harding Street, Waupaca, WI 54981 (715) 258-6230
<https://waupaca.extension.wisc.edu/>

4-H/Positive Youth Development

Penny Tank, 4-H Program Educator
penny.tank@wisc.edu



Haley Nelson, Program Assistant
haley.nelson@wisc.edu

District 10 Director—**Chris Viou** chris.viou@wisc.edu

Human Development & Relationships

Alicia Utke
Alicia.utke@wisc.edu

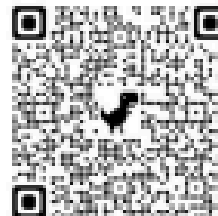
Community Development

Amy Ebert
Community Development Educator
amy.ebert@wisc.edu

FoodWise

Christi Gabriliska, FoodWise Nutrition Coordinator
christi.gabriliska@wisc.edu

Hailiee Paul, FoodWise Nutrition Educator
hailee.struck@wisc.edu



Support Staff—**Allie Bellin**, Program Assistant

The University of Madison-Extension provides affirmative action and equal opportunity in education, programming and employment for all qualified persons regardless of race, color, gender, creed, disability, religion, national origin, ancestry, age, sexual orientation, pregnancy, marital or parental, arrest or conviction record or veteran status.

Please make requests for reasonable accommodations to ensure equal access to educational programs as early as possible preceding the scheduled program, service or activity. For communicative accommodations in languages other than English, please contact languageaccess@wisc.edu For communicative accommodations based on a disability, please contact oedi@wisc.edu



Extension

UNIVERSITY OF WISCONSIN-MADISON
WAUPACA COUNTY

**811 HARDING STREET
WAUPACA WI 54981**

**NON-PROFIT ORGANIZATION
U.S. POSTAGE PAID
WAUPACA, WI 54981
PERMIT NO. 3**

RETURN SERVICE REQUESTED