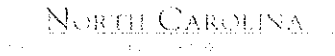


## Appendices



County Profile Contact (919) 715-6374

Commerce Economic Development Contact (919) 733-4977

## Demographics

### Population & Growth

	<b>Population</b>	<b>Annual Growth Rate</b>
2012 Total Population	55,028	0.4%
2007 Total Population	53,950	0.6%
2000 Total Population	51,731	
July 2006 Certified Population Estimate	.	
July 2006 Certified Population Growth	.	
July 2006 Certified Net Migration	.	

### Urban/Rural Representation

		<b>Urban/Rural Percent</b>
2000 Total Population: Urban - inside Urbanized Area	0	0.0%
2000 Total Population: Urban - inside Urbanized Clusters	19,187	37.1%
2000 Total Population: Rural - Farm	2,151	4.2%
2000 Total Population: Rural - Nonfarm	30,393	58.8%

### Estimated Population by Age

		<b>Pop by Age, % Est.</b>
2012 Median Age	43	
2007 Median Age	41	
2000 Median Age	39	
2007 Total Pop 0-19	13,640	25.3%
2007 Total Pop 20-29	6,265	11.6%
2007 Total Pop 30-39	6,182	11.5%
2007 Total Pop 40-49	8,810	16.3%
2007 Total Pop 50-59	7,629	14.1%
2007 Total Pop 60+	11,424	21.2%

## Working Commuters, 2000 Census

### Workers, Travel Time

Avg Travel Time, Not at Home	21
Workers Not Working at Home	23,655
Travel Time to Work: < 5 minutes	2,069
Travel Time to Work: 5-9 minutes	4,841
Travel Time to Work: 10-14 minutes	4,321
Travel Time to Work: 15-19 minutes	2,813
Travel Time to Work: 20-24 minutes	2,235
Travel Time to Work: 25-29 minutes	1,106
Travel Time to Work: 30-34 minutes	2,008
Travel Time to Work: 35-39 minutes	720
Travel Time to Work: 40-44 minutes	676
Travel Time to Work: 45-59 minutes	1,477
Travel Time to Work: 60-89 minutes	930
Travel Time to Work: 90+ minutes	459

### Workers, By Transportation

Worker Mode, Base	24,979
Work at Home	1,324
Drove Car/Truck/Van Alone	20,141
Carpooled Car/Truck/Van	2,389
Bus/Trolley Bus	94
Streetcar/Trolley Car	2
Subway/Elevated	3
Railroad	7
Ferryboat	0
Taxicab	13
Motorcycle	4
Bicycle	48
Walked	846
Other Means	108

**Travel to Work**

Worked in State/County of Residence	16,796
Worked in State/Outside County of Residence	8,065
Worked Outside State of Residence	118

**Commuters****Percent by Residence**

	67.2%
	32.3%
	0.5%

**Education****Pop Age 25+, %**

2008 Average SAT score	.	
2008 Percent of Graduates taking SAT	.	
2005-06 Higher Education Completions	.	
2005-06 Higher Education Total Enrollment	.	
2000 Education Attainment - At Least High School Graduate	28,704	82.7%
2000 Education Attainment - At Least Bachelor's Degree	5,156	14.8%

**Housing****Growth / Appreciation Est**

2012 Total Housing	25,468	4.1%
2007 Total Housing	24,472	
2012 Median Value of Owner Occupied Housing	168,287	18.6%
2007 Median Value of Owner Occupied Housing	141,874	
2007 Owner Occupied Housing	16,617	
2007 Renter Occupied Housing	4,642	
2007 Total Households	21,259	
2000 Median Year Housing Structure Built	1,965	

**Income****Growth Estimated**

2012 Median Family Income	\$66,082	13.0%
2007 Median Family Income	\$58,459	20.1%
2000 Median Family Income	\$48,686	
2012 Median Household Income	\$55,510	12.6%
2007 Median Household Income	\$49,311	20.6%
2000 Median Household Income	\$40,898	
2007 Median Disposable Income	\$36,340	
2007-2012 Per Capita Income: Annual Compound Growth Rate %		3.3%
2012 Per Capita Income	\$27,482	17.4%
2007 Per Capita Income	\$23,404	25.4%
2000 Per Capita Income	\$18,664	
2000 Total Pop with Income Below Poverty Level	3,366	
2000 Percent of Pop with Income Below Poverty Level	6.8%	

**Employment / Unemployment****Year to Date****2007 Annual**

Employment (YTD2008Q1)	26,041	26,565
Unemployment (YTD2008Q1)	1,820	1,512
Unemployment Rate (YTD2008Q1)	6.5%	5.4%
Announced Job Creation (YTD2008Q1)	.	.
Total Announced Investments (\$mil)(YTD2008Q1)	.	.
Lost Jobs, Closings & Layoffs (YTD2008Q2)	.	.
Establishment Events, Closings & Layoffs (YTD2008Q2)	.	.

## Appendix A

Employment / Wages by Industry	2007 4th Qtr Employment	2007 Annual Employment	2007 4th Qtr Avg Weekly Wage	2007 Avg Weekly Wage
Total All Industries	16,319	16,352	\$630	\$589
Total Government	3,093	3,008	\$544	\$551
Total Private Industry	13,227	13,344	\$650	\$597
Agriculture Forestry Fishing & Hunting	0	0	.	.
Mining	0	0	.	.
Utilities	0	0	.	.
Construction	687	692	\$633	\$620
Manufacturing	5,307	5,258	\$912	\$825
Wholesale Trade	1,092	1,083	\$731	\$791
Retail Trade	2,112	2,090	\$381	\$360
Transportation and Warehousing	198	195	\$607	\$581
Information	679	691	\$751	\$670
Finance and Insurance	483	481	\$859	\$737
Real Estate and Rental and Leasing	120	125	\$332	\$290
Professional and Technical Services	354	358	\$617	\$574
Management of Companies and Enterprises	0	0	.	.
Administrative and Waste Services	0	0	.	.
Educational Services	1,709	1,629	\$597	\$608
Health Care and Social Assistance	273	278	\$551	\$576
Arts, Entertainment and Recreation	309	373	\$215	\$195
Accommodation and Food Services	1,774	1,884	\$180	\$172
Other Services Ex. Public Admin	404	412	\$400	\$375
Public Administration	818	803	\$457	\$467
Unclassified	0	0	\$0	\$0

## Quality of Life

## Taxes

FY2008-09 Property Tax Rate per \$100 Value .  
 FY2006-07 Annual Taxable Retail Sales (\$mil) .  
 2008 Tier designation .

## Weather

Annual Rainfall .  
 Annual Snowfall .  
 Average Annual Temperature .  
 Average Annual High Temperature .  
 Average Annual Low Temperature .

## Commercial/Retail/Industrial

2008 Available Industrial Buildings .  
 2007 Establishments: Total Private Industry 1,230  
 2007 Establishments: Manufacturing 92

## Childcare

May 2008 Licensed Child Care Facilities .  
 May 2008 Licensed Child Care Slots .

## Healthcare Providers

2006 Number of Physicians .  
 2006 Physicians per 10,000 population .  
 2006 RNs per 10,000 population .  
 2006 Dentists per 10,000 population .  
 2006 Pharmacists per 10,000 population .

## Local Retail Business

2007 Total Retail Sales (With Food/Drink) (\$mil) .  
 2007 Total Retail Businesses (With Food/Drink) .  
 2007 Avg Household Retail Demand (Food/Drink) (\$) .

## Sources:

ESRI for demographics, working population, educational attainment, housing, income, crime, weather, and retail data. <http://www.esri.com>  
 NC Dept. of Education and various state education departments for SAT data by county system. <http://www.ncpublicschools.org>  
 US Dept. of Education, National Center for Education Statistics for higher education data. <http://nces.ed.gov/ipeds/>  
 NC Commerce for announced new jobs and investment, NC tiers, and number of industrial buildings. <http://www.nccommerce.com/en>  
 NC Employment Security Commission for lost jobs and affected establishments data. <http://www.ncesc.com>  
 NC Dept. of Health & Human Services for childcare data. <http://www.ncdhhs.gov/>  
 UNC Sheps Center for healthcare provider statistics. <http://www.shepscenter.unc.edu/>  
 US Bureau of Labor Statistics for employment and unemployment, wages and establishments by industry. <http://www.bls.gov>

## Notes:

Data are the latest available at the date the profile was prepared. SAT scores use the new scoring system including a writing test for a perfect score of 2400 and represent county systems. ESRI 2007/2012 data are projections. Some data may be available only for North Carolina. For further details or questions, please check the Data Sources Guide at <https://edis.commerce.state.nc.us/docs/bibliography/dataGuide.htm>.

U.S. Census Bureau  
American FactFinder



**TM-P002. Persons per Square Mile: 2000**

Universe: Total population

Data Set: Census 2000 Summary File 1 (SF 1) 100-Percent Data

**Waupaca County, Wisconsin by Census Tract**

NOTE: For information on confidentiality protection, nonsampling error, definitions, and count corrections see <http://factfinder.census.gov/home/en/datanotes/expsf1u.htm>

**Legend**

**Data Classes**

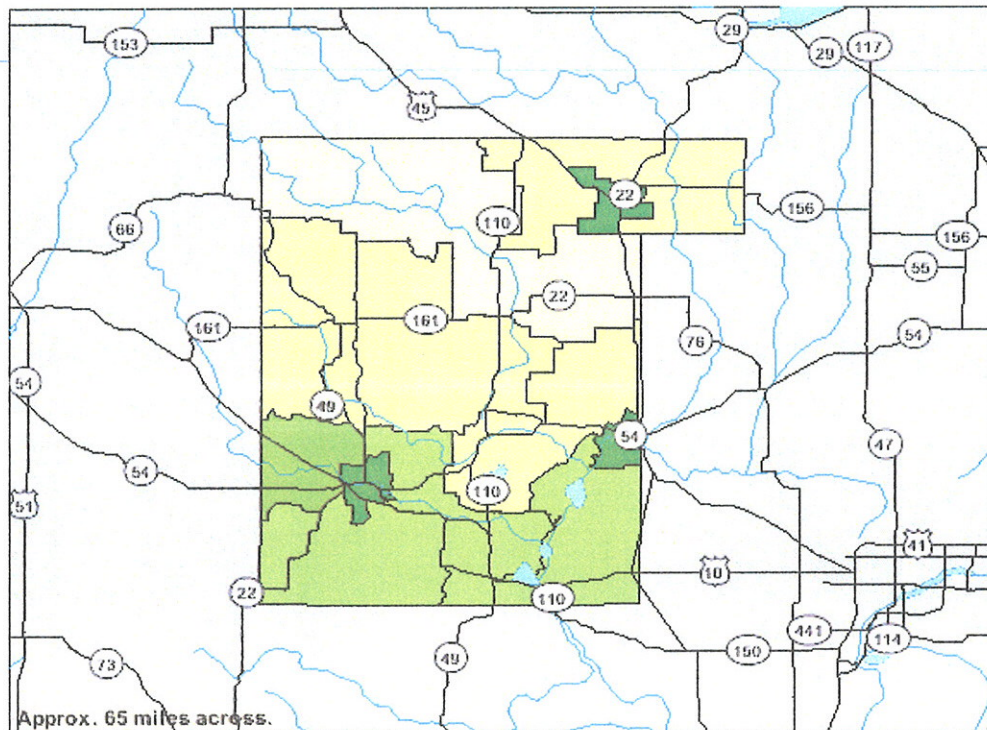
Persons/Sq Mile

	17 - 41
	41 - 65
	65 - 88
	88 - 110
	110 - 156

**Features**

- Major Road
- Stream/Waterbody
- Stream/Waterbody

Items in text  
are not visible  
at this zoom level



Source: U.S. Census Bureau, Census 2000 Summary File 1, Matrix P1

**U.S. Census Bureau**  
**American FactFinder**



**TM-P004A. Percent of Persons Who Are White Alone: 2000**  
**Universe: Total population**  
**Data Set: Census 2000 Summary File 1 (SF 1) 100-Percent Data**  
**Waupaca County, Wisconsin by Census Tract**

NOTE: For information on confidentiality protection, nonsampling error, definitions, and count corrections see <http://factfinder.census.gov/home/en/datanotes/expsf1u.htm>.

**Legend**

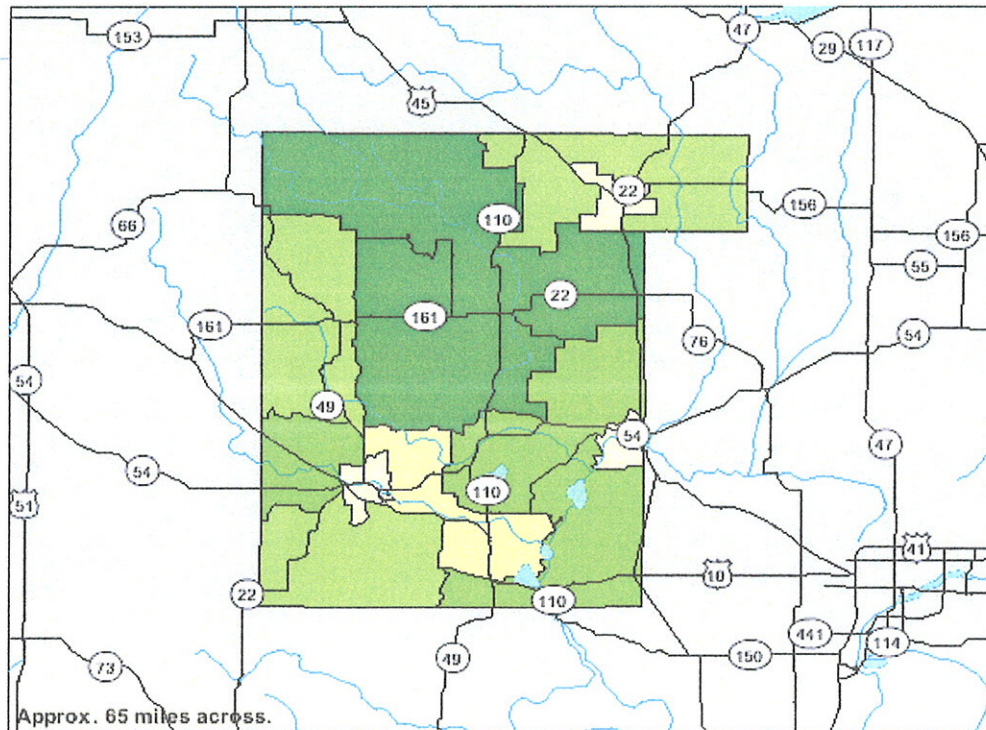
**Data Classes**

Percent
96.5 - 97.2
97.3 - 97.8
97.9 - 98.4
98.5 - 98.7
98.8 - 99.1

**Features**

- Major Road
- Stream/Waterbody
- Stream/Waterbody

Items in text  
are not visible  
at this zoom level



Source: U.S. Census Bureau, Census 2000 Summary File 1, Matrices P1, and P7.



U.S. Census Bureau  
American FactFinder



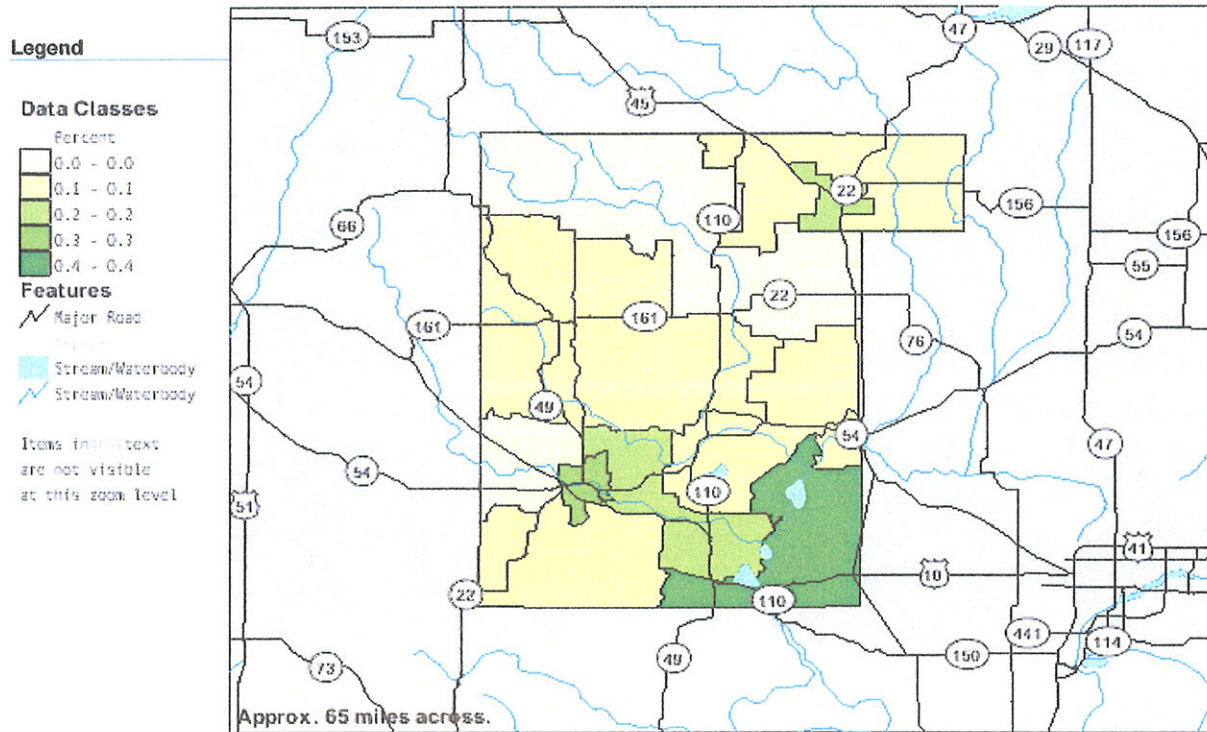
**TM-P004B. Percent of Persons Who Are Black or African American Alone: 2000**

Universe: Total population

Data Set: Census 2000 Summary File 1 (SF 1) 100-Percent Data

**Waupaca County, Wisconsin by Census Tract**

NOTE: For information on confidentiality protection, nonsampling error, definitions, and count corrections see <http://factfinder.census.gov/home/en/datanotes/expsf1u.htm>



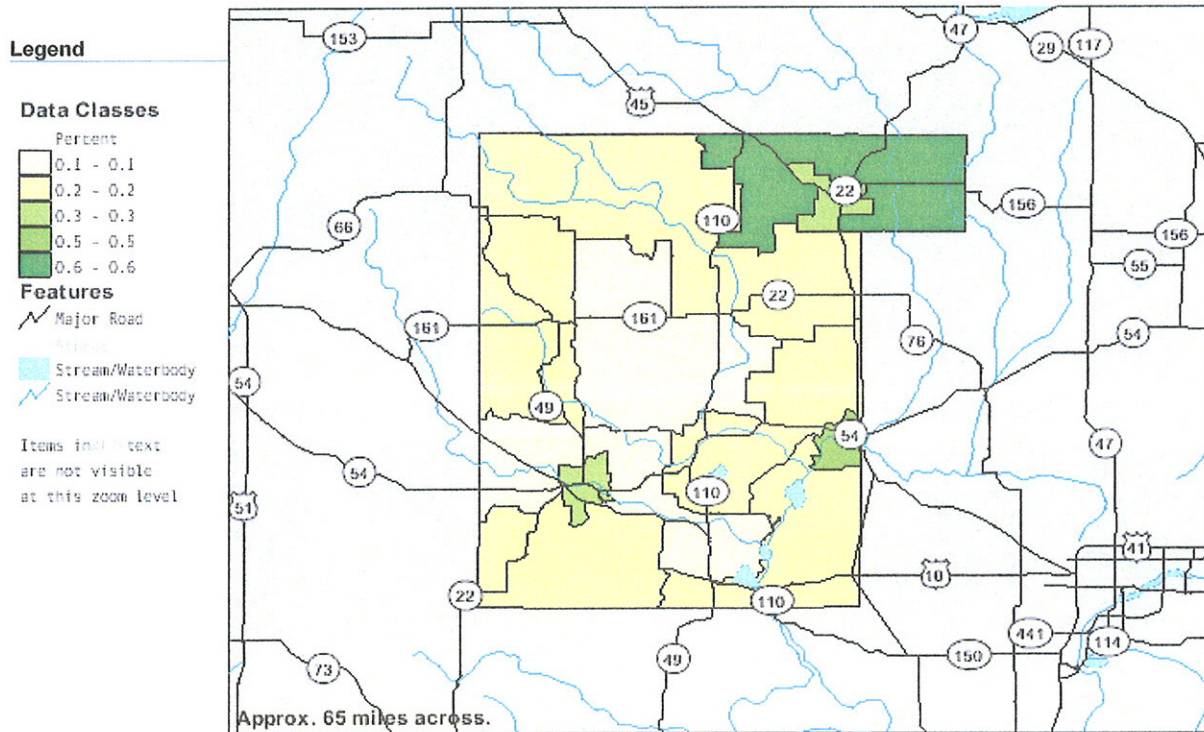
Source: U.S. Census Bureau, Census 2000 Summary File 1, Matrices P1, and P7.

**U.S. Census Bureau**  
**American FactFinder**



**TM-P004D. Percent of Persons Who Are Asian Alone: 2000**  
Universe: Total population  
Data Set: Census 2000 Summary File 1 (SF 1) 100-Percent Data  
**Waupaca County, Wisconsin by Census Tract**

NOTE: For information on confidentiality protection, nonsampling error, definitions, and count corrections see <http://factfinder.census.gov/home/en/datanotes/expsf1u.htm>



Source: U.S. Census Bureau. Census 2000 Summary File 1, Matrices P1, and P7



U.S. Census Bureau  
American FactFinder



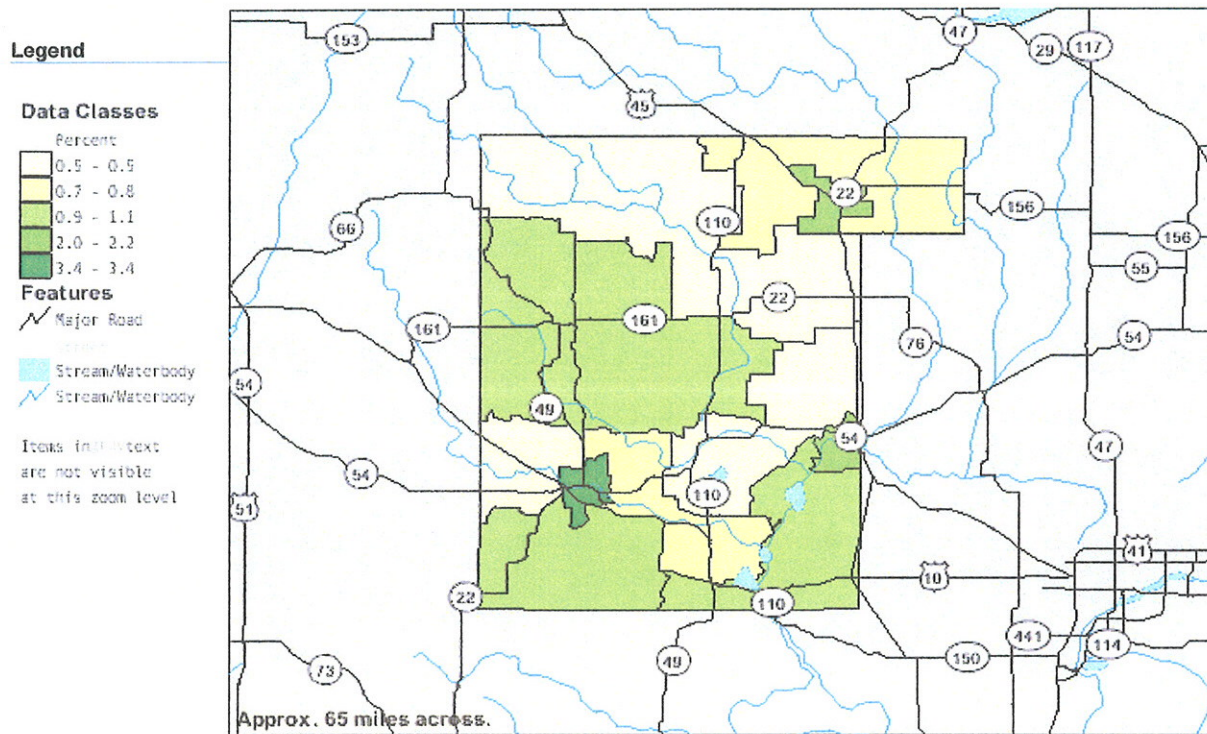
**TM-P004H. Percent of Persons Who Are Hispanic or Latino (of any race): 2000**

Universe: Total population

Data Set: Census 2000 Summary File 1 (SF 1) 100-Percent Data

**Waupaca County, Wisconsin by Census Tract**

NOTE: For information on confidentiality protection, nonsampling error, definitions, and count corrections see <http://factfinder.census.gov/home/en/datanotes/expsf1u.htm>.



Source: U.S. Census Bureau, Census 2000 Summary File 1, Matrices P1, P8.

U.S. Census Bureau  
American FactFinder

**TM-P041. Percent of Persons 25 Years and Over With High School Diploma or More Education: 2000**  
Universe: Population 25 years and over  
Data Set: Census 2000 Summary File 3 (SF 3) - Sample Data  
**Waupaca County, Wisconsin by Census Tract**

NOTE: Data based on a sample except in P3, P4, H3, and H4. For information on confidentiality protection, sampling error, nonsampling error, definitions, and count corrections see <http://factfinder.census.gov/home/en/datanotes/expsf3.htm>.

**Legend**

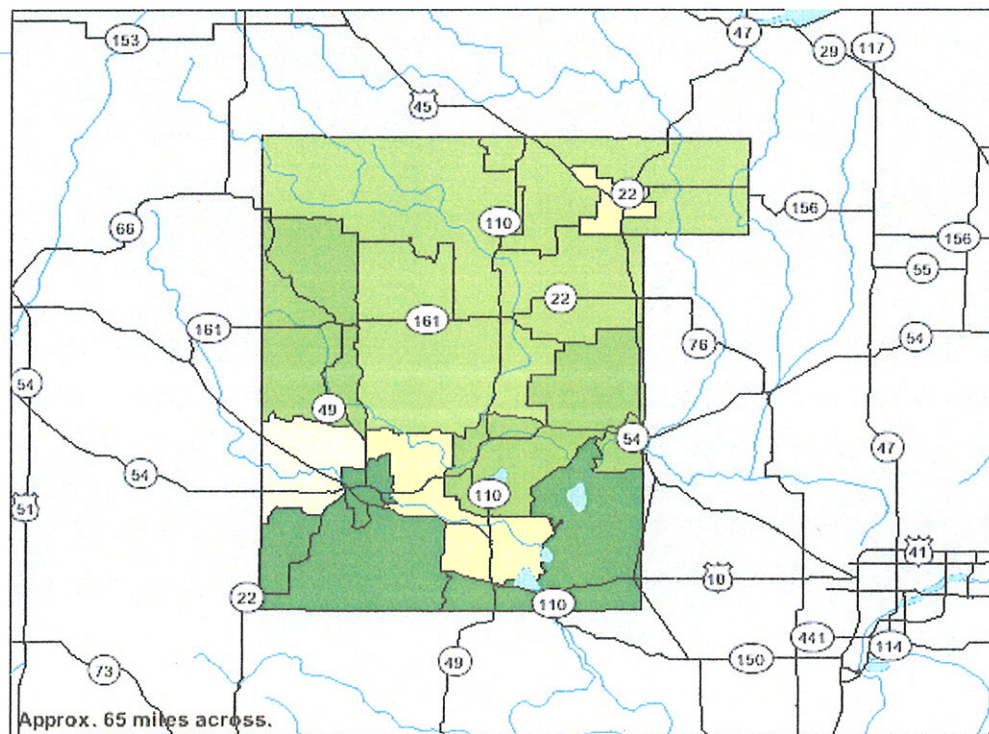
**Data Classes**

Percent
74.3 - 74.3
78.5 - 79.4
80.5 - 81.1
83.1 - 84.7
86.2 - 87.4

**Features**

- Major Road
- Stream/Waterbody
- Stream/Waterbody

Items in context  
are not visible  
at this zoom level



Source: U.S. Census Bureau, Census 2000 Summary File 3, Matrix P37.



# U.S. Census Bureau

## American FactFinder



**TM-P063. Median Household Income in 1999: 2000**  
 Universe: Households  
 Data Set: Census 2000 Summary File 3 (SF 3) - Sample Data  
**Waupaca County, Wisconsin by Census Tract**

NOTE: Data based on a sample except in P3, P4, H3, and H4. For information on confidentiality protection, sampling error, nonsampling error, definitions, and count corrections see <http://factfinder.census.gov/home/en/datanotes/expsf3.htm>.

### Legend

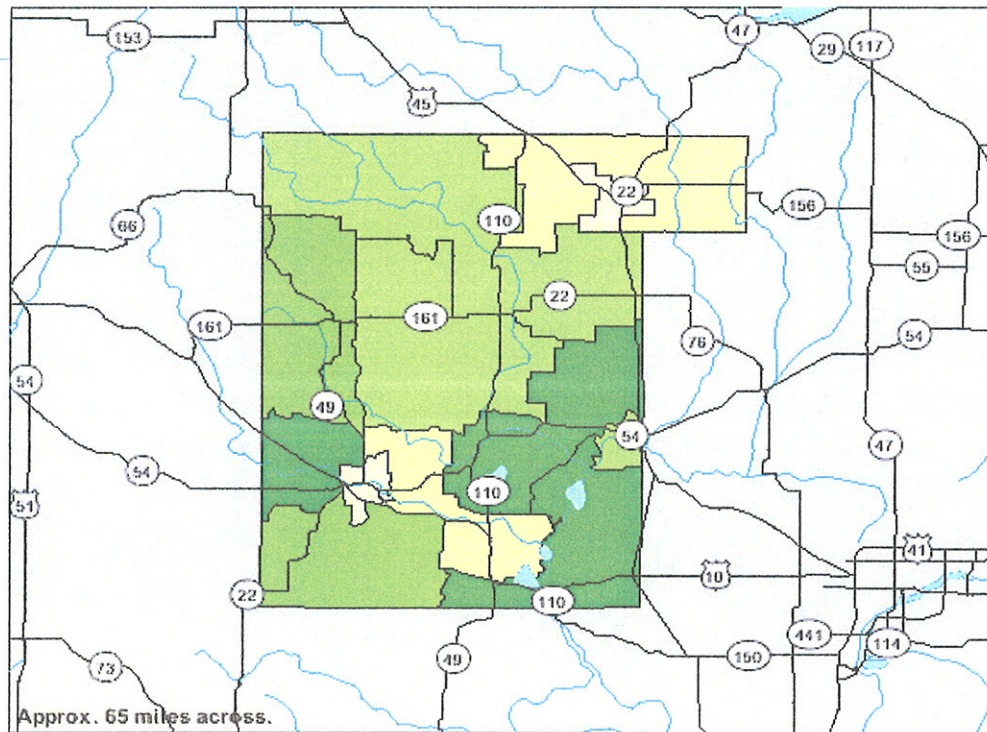
#### Data Classes

Dollars
32765 - 34225
37132 - 38906
40143 - 40865
42254 - 43875
49167 - 50488

#### Features

	Major Road
	Stream
	Stream/Waterbody
	Stream/Waterbody

Items in text  
 are not visible  
 at this zoom level



Source: U.S. Census Bureau, Census 2000 Summary File 3, Matrix P53.

## 2005 PROFILE FOR WAUPACA COUNTY

First of four pages

## POPULATION ESTIMATES

Total 2005 Population	53,158
Population per square mile	71
County ranking in state ( 1-72)	25
Age	Male
0-14	4,763
15-19	1,805
20-24	1,487
25-29	1,403
30-34	1,436
35-39	1,747
40-44	2,139
45-54	4,028
55-64	2,843
65-74	2,030
75-84	1,760
85+	1,054
Total	26,495
Age	Female
0-17	5,859
18-44	8,921
45-64	6,871
65+	4,844
Total	26,495
Poverty Estimates for 2000	Estimate
All ages	3,495
Ages 0-17	1,075
	( C.I. +/- )
	190
	( 5%)
	93
	( 9%)

## EMPLOYMENT

Average wage for jobs covered by unemployment compensation (place of work)	\$30,341
Labor Force Estimates	Annual Average
Civilian Labor Force	28,183
Number employed	26,698
Number unemployed	1,485
Unemployment rate	5.3%

## LONG-TERM CARE

Community Options and MA Waiver as HRSR reports costs for services	Clients	Costs
COP	4	\$129,056
MA Waiver *		
CIP1A	9	\$682,375
CIP1B	124	\$3,147,403
CIP2	67	\$790,373
COP-W	119	\$1,146,166
CLTS	13	\$247,109
Brain Injury	2	\$51,761
Total COP/Wvrs	338	\$6,194,242
\$402,138 of the above waiver costs were paid as local match/overmatch using COP funds. This amount is not included in above COP costs.		
* Waiver costs reported here include federal funding.		
Eligible and Waiting	Clients	Costs
	228	n/a
(Family Care not provided in county)		

Note: Eligible and waiting clients will be phased into the COP and MA Waivers as available.

Home Health Agencies	1
Patients	294
Patients per 10,000 pop.	55
Nursing Homes	10
Licensed beds	1,409
Occupancy rate	92.9%
Residents on Dec.31	1,307
Residents age 65 or older per 1,000 population	134

## LOCAL HEALTH DEPARTMENTS

Staffing - FTE	Number	Per 10,000 Population
Total staff	21.2	4.0
Administrative	3.2	0.6
Public health nurses	3.8	0.7
Other prof. staff	10.5	2.0
Technical/Paraprof.	0.7	0.1
Support staff	3.0	0.6
Funding		Per capita
Total	\$1,417,587	\$26.67
Local Taxes	\$487,297	\$9.17

## LICENSED ESTABLISHMENTS

Type	Capacity	Facilities
Bed & Breakfast	39	10
Camps	2,130	23
Hotels, Motels	654	32
Tourist Rooming	197	66
Pools		16
Restaurants		261
Vending		5

## WIC PARTICIPANTS

Pregnant/Postpartum	Number
Infants	378
Children, age 1-4	428
Total	610
	1,416

## CANCER INCIDENCE (2004)

Primary Site	Number
Breast	30
Cervical	1
Colorectal	37
Lung and Bronchus	36
Prostate	48
Other sites	134
Total	286

Note: Totals shown are for invasive cancers only.



## 2005 PROFILE FOR WAUPACA COUNTY

Second of four pages

TOTAL LIVE BIRTHS			NATALITY			
	Births	Percent	Birth Order	Births	Percent	Marital Status of Mother
Crude Live Birth Rate	537		First	210	39	Married
General Fertility Rate	10.1		Second	182	34	Not married
	53.6		Third	96	18	Unknown
			Fourth or higher	49	9	
			Unknown	0	0	
Live births with reported congenital anomalies	8	1.5%				
Delivery Type	Births	Percent	1st Prenatal Visit	Births	Percent	Education of Mother
Vaginal after previous cesarean	4	1	1st trimester	450	84	Elementary or less
Forceps	1	<.5	2nd trimester	72	13	Some high school
Other vaginal	396	74	3rd trimester	12	2	High school
Primary cesarean	77	14	No visits	3	1	Some college
Repeat cesarean	59	11	Unknown	0	0	College graduate
						Unknown
Birthweight	Births	Percent	Prenatal Visits	Births	Percent	Smoking Status of Mother
<1,500 gm	3	0.6	No visits	3	1	Smoker
1,500-2,499 gm	27	5.0	1-4	15	3	Nonsmoker
2,500+ gm	507	94.4	5-9	118	22	Unknown
Unknown	0	0	10-12	246	46	
			13+	153	28	
			Unknown	2	<.5	
Race/Ethnicity	Births	Percent	Low Birthweight (under 2,500 gm)	1st Trimester	Trimester of First Prenatal Visit	Births
White	519	97	Births	Births	2nd Trimester	Other/Unknown
Black/Afr.American	0	0	Percent	Percent	Births	Births
American Indian	0	0	28 5.4	85	66 13	Percent
Hispanic/Latino	16	3				Percent
Laotian/Hmong	0	0				Percent
Other/Unknown	2	<.5				Percent
						Percent
Age of Mother	Births	Fertility Rate	Low Birthweight (under 2,500 gm)	1st Trimester	Trimester of First Prenatal Visit	Births
<15	0	--	Births	Births	2nd Trimester	Other/Unknown
15-17	15	14	Percent	Percent	Births	Births
18-19	26	37	3 20.0	73	3 20	Percent
20-24	140	94		73	6 23	Percent
25-29	170	121	7 5.0	80	24 17	Percent
30-34	122	85	10 5.9	88	16 9	Percent
35-39	55	31	9 7.4	87	12 10	Percent
40+	9	4	1 1.8	85	8 15	Percent
Unknown	0	--		56	3 33	Percent
						Percent
Teenage Births	41	23				Percent

\* Data not reported if age or race category has less than 5 births.

## ----- MORBIDITY -----

## REPORTED CASES OF SELECTED DISEASES\*

Disease	Number
Campylobacter Enteritis	<5
Giardiasis	<5
Hepatitis Type A	0
Hepatitis Type B**	0
Hepatitis NANB/C	15
Legionnaire's	0
Lyme	23
Measles	0
Meningitis, Aseptic	0
Meningitis, Bacterial	0
Mumps	0
Pertussis	0
Salmonellosis	<5
Shigellosis	5
Tuberculosis	0
	0

\* 2005 provisional data.

\*\* Includes all positive HBsAg test results.

## Sexually Transmitted Disease

Chlamydia	57
Trachomatis	10
Genital Herpes	<5
Gonorrhea	0
Syphilis	0

## ----- IMMUNIZATIONS -----

Children in Grades K-12 by Compliance Level	
Compliant	10,192
Non-compliant	105
Percent Compliant	99.0

## ----- MORTALITY -----

Note: Death rates (except infant) are per 100,000 population. Infant, neonatal, and postneonatal death rates are per 1,000 live births. Perinatal and fetal death rates are per 1,000 live births plus fetal deaths. Rates are not calculated for fewer than 20 deaths.

TOTAL DEATHS		677
Crude Death Rate		1,274
Age	Deaths	Rate
1-4	1	.
5-14	2	.
15-19	3	.
20-34	7	.
35-54	37	230
55-64	55	926
65-74	91	2,300
75-84	214	6,603
85+	265	16,677

Selected Underlying Cause	Deaths	Rate
Heart Disease (total)	184	346
Ischemic heart disease	134	252
Cancer (total)	131	246
Trachea/Bronchus/Lung	21	40
Colorectal	16	.
Female Breast	10	*
Cerebrovascular Disease	58	109
Lower Resp. Disease	23	43
Pneumonia & Influenza	31	58
Accidents	37	70
Motor vehicle	14	.
Diabetes	10	.
Infect./Parasitic Dis.	5	.
Suicide	7	.

\* Based on female population.

## ALCOHOL AND DRUG ABUSE AS UNDERLYING OR CONTRIBUTING CAUSE OF DEATH

Alcohol	8	.
Tobacco Use	110	207
Other Drugs	6	.

## ----- MOTOR VEHICLE CRASHES -----

Note: These data are based on location of crash, not on residence.

Type of Motor Vehicle Crash	Persons Injured	Persons Killed
Total Crashes	446	12
Alcohol-Related	62	5
With Citation:		
For OWI	32	0
For Speeding	38	0
Motorcyclist	22	0
Bicyclist	3	1
Pedestrian	3	0

2005 HOSPITALIZATIONS				2005 HOSPITALIZATIONS			
DISEASE / AGE GROUP	Number	Per 1,000 Pop	Average Stay (Days)	Average Charge	Charge Per Capita	DISEASE / AGE GROUP	Number
Injury-Related: All							
Total	499	9.4	4.2	\$15,756	\$148	Alcohol-Related	129
<18	29	2.4	2.4	\$11,277	\$27	Total	129
18-44	100	5.5	4.5	\$18,881	\$104	18-44	66
45-64	126	8.9	3.9	\$15,272	\$136	45-64	53
65+	244	27.8	4.4	\$15,257	\$424	Pneumonia and Influenza	307
Injury: Hip Fracture	80	1.5	4.8	\$15,900	\$24	Total	307
Total	67	7.6	4.6	\$15,696	\$120	<18	33
65+	67	7.6	4.6	\$15,696	\$120	45-64	50
Injury: Poisonings	35	0.7	1.9	\$4,352	\$3	65+	207
Total	15	.	.	.	.	Cerebrovascular Disease	140
18-44	15	.	.	.	.	Total	140
65+	15	.	.	.	.	45-64	33
Psychiatric	365	6.9	6.3	\$6,375	\$44	65+	106
Total	99	8.3	9.1	\$9,527	\$79	Chronic Obstructive Pulmonary Disease	112
<18	144	7.9	4.7	\$4,414	\$35	Total	112
18-44	79	5.6	6.9	\$6,777	\$38	<18	11
45-64	43	4.9	4.1	\$4,951	\$24	18-44	5
65+	43	4.9	4.1	\$4,951	\$24	45-64	22
Coronary Heart Disease	294	5.5	3.3	\$26,038	\$144	65+	74
Total	93	6.6	2.8	\$30,340	\$199	Drug-Related	28
45-64	193	22.0	3.6	\$24,071	\$529	Total	12
65+	193	22.0	3.6	\$24,071	\$529	18-44	.
Malignant Neoplasms (Cancers): All	271	5.1	5.3	\$19,738	\$101	Total Hospitalizations	6,640
Total	14	7.8	5.2	\$20,707	\$161	Total	124.9
18-44	110	16.4	5.5	\$19,182	\$314	<18	85.8
45-64	144	16.4	5.5	\$19,182	\$314	18-44	1,026
65+	144	16.4	5.5	\$19,182	\$314	45-64	1,432
Neoplasms: Female Breast (rates for female population)	13	.	.	.	.	65+	1,405
Total	13	.	.	.	.	2,777	316.0
Neoplasms: Colo-rectal	41	0.8	7.4	\$24,431	\$19	PREVENTABLE HOSPITALIZATIONS*	
Total	29	3.3	7.2	\$23,147	\$76	Total	918
65+	29	3.3	7.2	\$23,147	\$76	<18	83
Neoplasms: Lung	22	0.4	6.6	\$25,594	\$11	18-44	65
Total	22	0.4	6.6	\$25,594	\$11	45-64	166
Diabetes	44	0.8	3.9	\$13,375	\$11	65+	604
Total	18	.	.	.	.	* Hospitalizations for conditions where timely and effective ambulatory care can reduce the likelihood of hospitalization.	
65+	18	.	.	.	.		

# U.S. Census Bureau

## American FactFinder



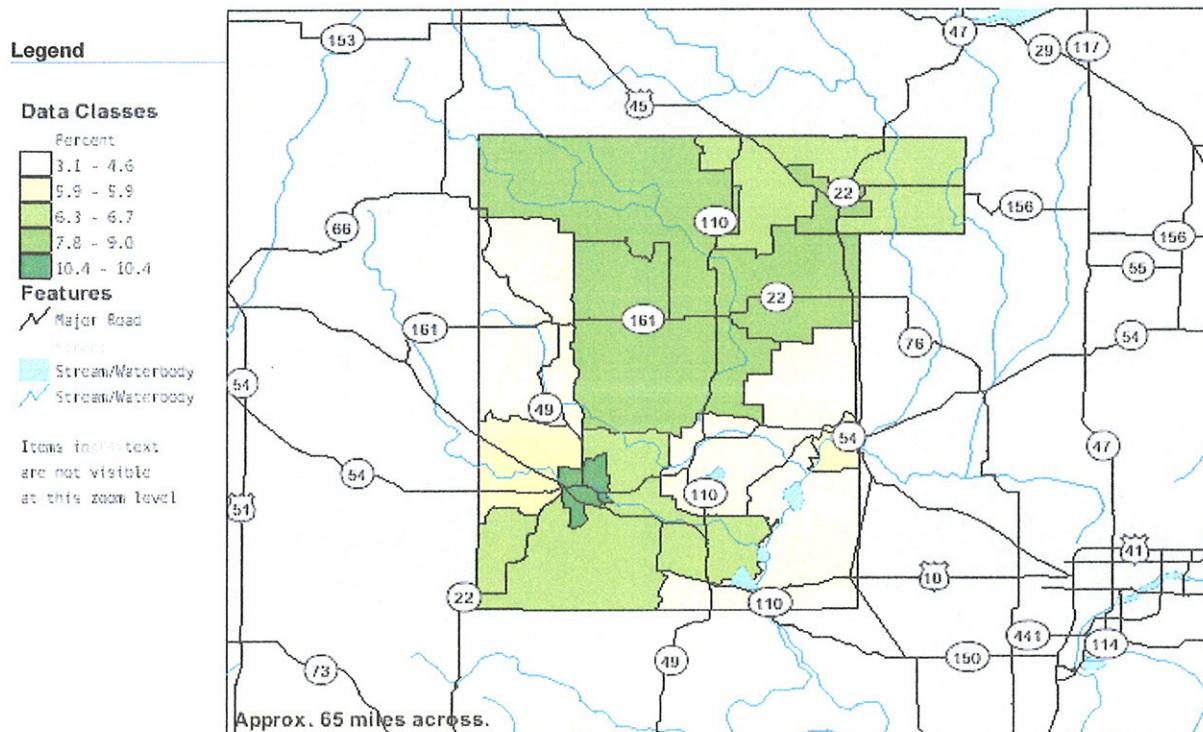
### TM-P067. Percent of Persons Below the Poverty Level in 1999: 2000

Universe: Total population

Data Set: Census 2000 Summary File 3 (SF 3) - Sample Data

Waupaca County, Wisconsin by Census Tract

NOTE: Data based on a sample except in P3, P4, H3, and H4. For information on confidentiality protection, sampling error, nonsampling error, definitions, and count corrections see <http://factfinder.census.gov/home/en/datanotes/expsf3.htm>.



Source: U.S. Census Bureau, Census 2000 Summary File 3, Matrix P87.



U.S. Census Bureau  
American FactFinder



**TM-P069. Percent of Families Below the Poverty Level in 1999: 2000**

Universe: Families

Data Set: Census 2000 Summary File 3 (SF 3) - Sample Data

**Waupaca County, Wisconsin by Census Tract**

NOTE: Data based on a sample except in P3, P4, H3, and H4. For information on confidentiality protection, sampling error, nonsampling error, definitions, and count corrections see <http://factfinder.census.gov/home/en/datanotes/expsf3.htm>

**Legend**

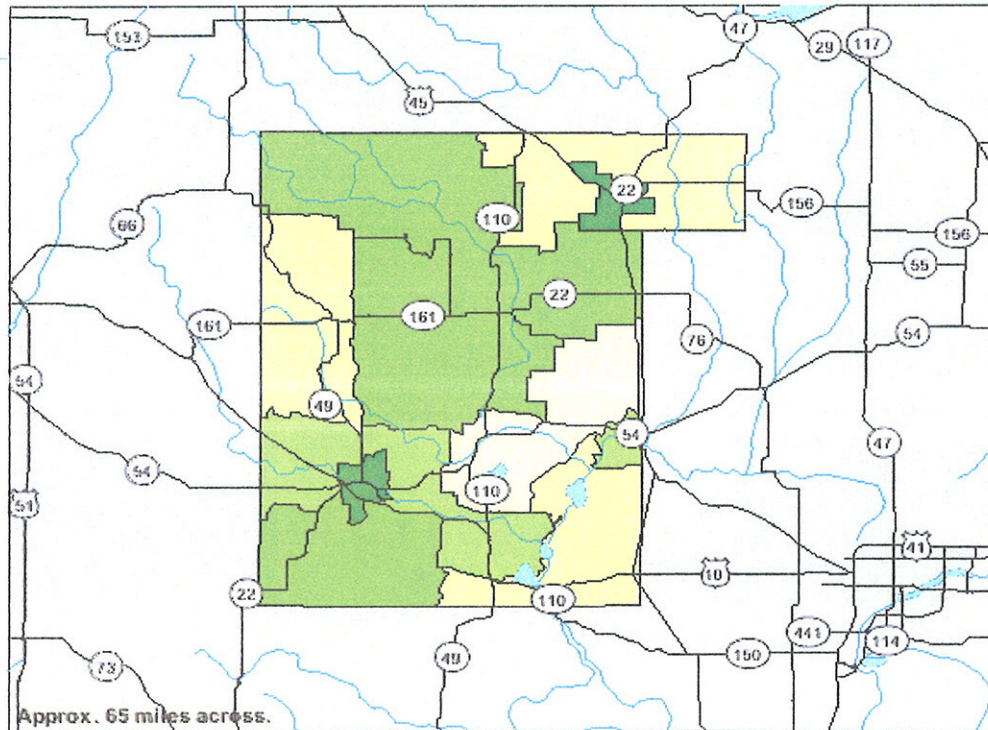
**Data Classes**

Percent
1.8 - 1.9
2.7 - 3.6
4.2 - 4.8
5.1 - 6.1
7.0 - 7.4

**Features**

- Major Road
- Stream/Waterbody
- Stream/Waterbody

Items in text  
are not visible  
at this zoom level



Source: U.S. Census Bureau, Census 2000 Summary File 3, Matrix P90.

# NuAct



Waupaca County Nutrition & Activity Coalition

# Resource Kit

## For Waupaca County Schools

### From Policy to Action

Healthy School Environment Action Plans  
School Wellness Policy Implementation

For more information contact Bev Hall at (715) 258-6276  
or download these and other reference and promotion  
materials at <http://waupaca.uwex.edu> then click on  
“*Community Connections*”, then “*NuAct*”.

## Index of Resources

**Resource Kit: From Policy to Action Title Page**  
**NuAct Website for further information**

<b><i>Orange Titles: Policy Support</i></b>	<b><i>Source</i></b>
What Works in ....Worksites	Wisconsin Dept. of Health and Family Services
What Works in.... Schools	Wisconsin Dept. of Health and Family Services
School Health Program Report Card	CDC: Dept. of Health and Human Services
The Obesity Epidemic & Wisconsin Students	WI Dept. of Health and Human Services
Current Nutrition Trends & Obesity	Sheboygan County Coalition
How Children's Weight Has Changed	Sheboygan County Coalition
Impact of Inactivity and Child Obesity	Sheboygan County Coalition
School Role in Preventing Child Obesity	The State Education Standard
School Play Role in Preventing Obesity	Institute of Medicine
Childhood Obesity Prevention Study	Institute of Medicine
Parent Role in Preventing Obesity	Institute of Medicine
<b><i>Blue Titles: Healthy Food Sales</i></b>	<b><i>Source</i></b>
Healthy Vending Guidelines	Fit City Health Collaborative
School Concession Sales Choices	Waupaca County NuAct
Healthy Celebrations	Connecticut Department of Education
Healthy Fundraising	Connecticut Department of Education
School Vending Machine Pyramid	Center for Science in the Public Interest
Guidelines Choose Healthier Vending	Kids First Rhode Island
School Breakfast: Energize Classroom	MN Department of Children, Family and Learning
<b><i>Yellow Titles: Healthy Snacks</i></b>	<b><i>Source</i></b>
Healthy Snacking	Waupaca County NuAct
Sam's Club Healthy Snack List	Waupaca County NuAct
Appendix A: Snack Foods	Waupaca County NuAct
Appendix B: Snack Foods	Waupaca County NuAct
Helping Children Prepare Healthy Snacks	University of Delaware
Children's Snacks: Food for Thought	Mayo Clinic
Drive Smart on the Food Snack Road	Marilyn Herman, Waupaca County UW-Extension
My Pyramid Kids Poster	USDA
My Pyramid Kids Poster 2	USDA
<b><i>Green Titles: Physical Activity</i></b>	<b><i>Source</i></b>
Balance First Curriculum Grades 1-2	America on the Move
Balance First Curriculum Grades 3-5	American on the Move
Promoting Lifelong Physical Activity	CDC
Get Moving...Physical Activity for Adults	North Carolina Cooperative Extension
Move It! Activity Pyramid	USDA Team Nutrition
Outside Fun and Fitness Coloring Sheet	American Heart Association

Inside Fun and Fitness	American Heart Association
My Pyramid Activity Poster	USDA
The Kids' Activity Pyramid	Penn State

<b><i>Pink Titles: Factsheets and Newsletter</i></b>	<b><i>Source</i></b>
Wellness In the Home Adds Up	University of Wyoming
Helping Tweens and Teens Eat Smart	Waupaca County NuAct
Soft Drinks Factsheet	MN Department of Health
Commitment Coupons	North Carolina Eat Smart, Move More Coalition
What Tweens Want and Need	North Carolina Public Health
Smart Drinks for a Healthy Weight	North Carolina Public Health
School Beverage Policy Considerations	North Carolina Public Health
Tasty Tips for Eating Well at Work	North Carolina Public Health
Raising Teens with Healthy Weights	North Carolina Public Health
Ten Ways to Color Holidays Healthy	North Carolina Public Health
12 Smart Ways to Right-Size Portions	North Carolina Public Health
Portion Sizes and School-Age Children	North Carolina Public Health
Portion Sizes Policy Considerations	North Carolina Public Health

***November 2006 – Waupaca County Nutrition and Activity Coalition***



**Table 1. Food Insecurity Prevalence and Percent Affirmative Responses to Individual Questions<sup>a</sup> for Participating Wisconsin WIC Families in 2007 and 2002**

<b>Food Insecurity Prevalence</b>	<b>2007</b> (n=19582)	<b>2002</b> (n=18248)
WIC households/families identified as having <b>low food security</b> (affirmative responses to two or more survey questions)	51%	44%
WIC households/families identified as having <b>very low food security</b> (affirmative responses to five or more survey questions)	15%	19%
<b>Responses to Individual Survey Questions<sup>a</sup></b>	<b>Percent Affirmative</b>	
1. The food we bought just didn't last, and we didn't have money to get more. Was that 1) often, 2) sometimes, or 3) never true for you in the last 12 months.	58% often/ sometimes	45% often/ sometimes
2. We couldn't afford to eat balanced meals. Was that 1) often, 2) sometimes, or 3) never true for you in the last 12 months.	47% often/ sometimes	42% often/ sometimes
3. In the last 12 months, did you, your family, or other adults in your household ever cut the size of your meals or skip meals because there wasn't enough money for food?	35% Yes	30% Yes
4. How often did this happen...1) almost every month, 2) some months but not every month, or 3) only in 1 or 2 months?	15% of those who answered Yes to #3 answered 1 or 2 (5% of all families)	21% of those who answered Yes to #3 answered 1 or 2 (6% of all families)
5. In the last 12 months, did you ever eat less than you felt you should because there wasn't enough food?	32% Yes	31% Yes
6. In the last 12 months, were you ever hungry, but didn't eat because you couldn't afford enough food?	20% Yes	18% Yes

<sup>a</sup> Survey questions only constitute a valid measure of food insecurity when combined into an index.

<sup>b</sup> The names, but not the meanings, of food insecurity categories have changed since 2002. Previously, households were classified as having food insecurity with or without hunger. These same cut-points are now used to classify households as with very low food security and low food security, respectively<sup>16</sup>. Since 2002, questions were also reordered to reflect increasing need (as shown here), and question wording was changed slightly to clarify that experiences were due to a lack of money.<sup>17</sup>



# Wisconsin Food Security Project

A partnership of the Wisconsin DHFS  
and the University of Wisconsin-Extension

## WAUPACA COUNTY FOOD SECURITY PROFILE (2005)

County Wisconsin			County Wisconsin		
ECONOMIC AND DEMOGRAPHIC INDICATORS					
FOOD INSECURITY AND HUNGER			INCOME AND POVERTY		
Food insecurity rate (households) ^^	n/a	9.0%	Poverty rate *	6.8%	8.7%
Hunger rate (households) ^^	n/a	2.8%	Child poverty rate *	7.6%	10.8%
Food insecurity rate--WIC clients +	46.0%	44.0%	Median household income *	\$40,910	\$43,791
Hunger rate -- WIC clients +	19.0%	19.0%	HOUSEHOLD CHARACTERISTICS		
EMPLOYMENT AND EARNINGS			% nonelderly adults with disability **	15.4%	14.9%
Unemployment rate	5.3%	4.7%	% families headed by single mother **	6.8%	9.3%
Self-sufficiency wage ^	\$13.37	\$14.14	HOUSING AND TRANSPORTATION		
Median earnings -- male fulltime, full year workers *	\$35,002	\$37,062	% of renters paying at least 35% of income in rent **	17.1%	24.7%
Median earnings -- female fulltime, full year workers *	\$22,149	\$25,865	Median rent **	\$450	\$540
			% of households with no vehicle **	5.7%	7.9%
FEDERAL NUTRITION ASSISTANCE PROGRAMS					
FOOD STAMPS			SCHOOL BREAKFAST		
Total participants during year	3,626	552,066	Availability		
Child participants	1,710	274,082	# children in participating schools	8,584	569,704
% of population participating	7.0%	10.3%	% of lunch sites serving breakfast	74.0%	57.0%
% of children participating	12.9%	20.0%	% of high-poverty lunch sites serving breakfast	0.0%	80.0%
Participants per 100 poor persons	107.72	122.26			
# of application sites	1	133			
ELDERLY NUTRITION PROGRAMS			% of children approved for free or reduced price meals who attend school with breakfast	86.6%	78.3%
# congregate meal sites **	7	610	Participation		
# congregate meals served **	48,970	2,767,788	Average daily participation (ADP)	969	81,410
Congregate meals per 1000 elderly **	5,668	3,939	ADP free - reduced price breakfast	629	58,902
# home-delivered meals served **	49,199	2,629,108	ADP in breakfast relative to lunch	13.4%	14.9%
Home meals per 1000 elderly **	5,695	3,742	ADP in free and reduced price breakfast relative to lunch	28.5%	28.4%
SCHOOL LUNCH					
Availability			SUMMER MEALS PROGRAM		
# children in participating schools	10,658	936,384	Number of sites serving meals	0	364
Participation			Average daily attendance	0	30,454
Average daily participation (ADP)	7,244	545,537	Attendance in summer meals relative to free - reduced price lunch	0.0%	14.7%
ADP free and reduced price lunch	2,207	207,358	WOMEN, INFANTS AND CHILDREN (WIC)		
School characteristics			Total participants during year	1,416	203,851
% of lunch sites that are high poverty	11.0%	30.0%	% of eligible persons participating	70.1%	81.03%
% of children approved for free or reduced price lunch	26.3%	30.9%	ACCESS TO FARMERS' MARKETS		
# of farmers' markets approved to receive WIC and Senior nutrition program vouchers	0	176	County distributes Senior farmers' market vouchers	No	37
			County distributes WIC farmers' market vouchers	Yes	72
COMMUNITY INFRASTRUCTURE AND NUTRITION EDUCATION					
Hunger Prevention Council	Yes	31	WI Nutrition Education Program	No	60

Variable from 1999 \* Variable from 2000 \*\* Variable from 2002 +  
Variable from 2004 ^ Variable from 2002-2004 ^^

**Community Focus Groups for Waupaca County Priority Health Concerns**

*Good Morning, I am Linda Behm, Public Health Nurse.*

*Every five years the Department of Health is required to complete an assessment about the greatest health concerns in Waupaca County. We are asking for your help to identify these concerns.*

*The question we wish for you to consider is: What do you think are the most important health concerns in Waupaca County? What do you see, hear, and read about in your community or Waupaca County as a whole?*

*Also think about what you see, hear and read about within your professional occupation, community organizations, volunteer groups or churches – what are the most important health concerns?*

*Next we would appreciate if you would list your responses below to this question.*

*How do people in Waupaca County learn about health-related resources available to them?*

*While our helpers are tallying your votes, from your perspective, what needs to be available to make a healthier community? List your answer on the focus-group sheet.*

*Participants list highest priorities on your focus-group worksheet below.*

*From this point forward we will be focusing on these highest priorities that you have identified as a group. As a reminder we will be conducting similar focus sessions with a variety of audiences around the county and all of the input will be analyzed to document and create a final prevention plan for our county. Please spend no more than a minute on each Priority. I will keep track of the time for you. All of this information will help us develop a prevention plan for the county. Please begin.*

**Priority #1**

Contributing factors (situations, choices, signs, causes)

Barriers to addressing this concern

Population most affected by this health concern

Where and how do they learn about or access resources and help

**Priority #2**

Contributing factors (situations, choices, signs, causes)

Barriers to addressing this concern

Population most affected by this health concern

Where and how do they learn about or access resources and help

**Priority #3**

Contributing factors (situations, choices, signs, causes)

Barriers to addressing this concern

Population most affected by this health concern

Where and how do they learn about or access resources and help

**Priority #4**

Contributing factors (situations, choices, signs, causes)

Barriers to addressing this concern

Population most affected by this health concern

Where and how do they learn about or access resources and help

**Priority #5**

Contributing factors (situations, choices, signs, causes)

Barriers to addressing this concern

Population most affected by this health concern

Where and how do they learn about or access resources and help

*If you had a magic wand and, with one wish, you could improve the health of Waupaca County residents, what would you do?*

*Are there informational resources (data) we should be aware of that we may not be looking at? Where are these available? Who should be contacted?*



*Waupaca County Community Focus Group  
Priority Health Concerns*

**What do you think are the most important health concerns in your community?**  
(To help you answer this, what kinds of health issues, problems, do you and your family face? What health problems do you see in your neighborhood, your workplace, church or volunteer organizations?)

What do you think needs to be available to make a healthier community?

If you had a magic wand and, with one wish, you could improve the health of the residents of your community, what would you do?

**Waupaca County Needs Assessment Focus Groups  
2008**

January 24	NuAct Coalition
March 5	WCDHHS Board
April 14	Manawa Lions
April 17	Scandinavia Coffee Klatsch
May 14	Marion Learning Center – Mother’s Group
May 20	Marion Lionesses
June 17	Waupaca County Farm Bureau Board
June 23	Weyauwega-Fremont Lions
July 16	Waupaca Rotary
August 3	American Legion Ladies – Fremont
August 18	Iola Lions
September 2	Waupaca County Ministerial Association
September 11	New London Jaycees
September 29	Clintonville Lions



TRENDS IN RANKINGS	2004	2005	2006	2007	2008
Health Outcomes	60	61	62	63	62
Health Determinants	50	54	53	56	49

**HEALTH OUTCOMES****62**

Mortality: Years of potential life lost (YPLL)/100,000 population	6,350	± 125	4,020	5,979	45
General health status: % of people reporting fair/poor health	17.0%	± 2.9	6.6%	13.2%	66

**HEALTH DETERMINANTS****49****HEALTH CARE****48**

No health insurance (%)	12.6%	± 3.4	2.8%	7.4%	61
Did not receive needed health care (%)	2.6%	± 1.5	0.0%	2.2%	54
No dentist visit in past year (%)	32.0%	± 4.5	17.1%	25.4%	48
Poor diabetic care: Score based on % of diabetics without recommended care	46		36	50	22
No biennial mammography (%)	29.3%		18.9%	29.0%	35
Poor inpatient care: Score based on % of patients without recommended care	49		36	50	39

**HEALTH BEHAVIORS****50**

Cigarette smoking (%)	23.2%	± 4.6	12.3%	20.9%	54
Smoking during pregnancy (%)	20.1%		6.5%	14.1%	48
Physical inactivity (%)	43.0%	± 8.2	23.5%	44.5%	26
Obesity (%)	25.9%	± 4.8	17.0%	24.1%	43
Insufficient fruit and vegetable intake (%)	80.5%	± 4.8	64.0%	77.2%	51
Binge drinking (%)	24.7%	± 4.7	10.3%	23.2%	46
Motor vehicle crash rate: No. of people involved in a crash/1,000 population	43.4		20.6	41.4	45
Motor vehicle crash-related ER visits (onroad)/100,000 population	733	± 42	110	712	59
Motor vehicle crash-related ER visits (offroad)/100,000 population	162	± 20	38	91	54
Teen birth rate/1,000 births	27.9	± 3.8	8.8	30.9	45
Sexually transmitted disease rate/100,000 population	155	± 38	52	498	23
Violent crime rate/100,000 population	74.0		21.5	240.3	23

**SOCIOECONOMIC FACTORS****38**

High school noncompletion: % of students not graduating as expected	7.7%		0.0%	10.4%	43
No high school diploma: % of people age 25+ without a high school diploma	17.3%	± 0.9	7.8%	14.9%	46
Unemployment (%)	5.4%		3.5%	4.9%	40
Children in poverty (%)	8.1%	± 1.3	3.0%	12.4%	15
Divorce (%)	9.5%	± 0.6	6.7%	9.0%	51
Single parent households (%)	7.1%	± 0.8	5.3%	8.2%	39

**PHYSICAL ENVIRONMENT****67**

Air quality risk: Score based on measures from EPA and DNR	45		39	60	35
Nitrates in water: Estimated % of population exposed to excess nitrate levels	72.8%		0.0%	40.7%	63
Housing with increased lead risk: % of pre-1950s housing stock	38.0%	± 1.5	8.2%	31.1%	53
Lead poisoned children: % screened testing positive for lead poisoning	1.0%	± 0.9	0.0%	2.2%	33
Radon risk: % of homes screened with elevated radon levels	20.0%		1.9%	12.0%	72
Method of commuting: % of workforce that drives alone to work	80.6%		68.7%	79.5%	52

\*NR = Not Ranked



## References

- Athens, J.K., Taylor, K.W., Bookse, B.C., Rohan, A.M. & Remington, P.L. (2007). *Wisconsin County Health Rankings* Full Report. University of Wisconsin Population Health Institute.
- Berg, K. (2007) *Waupaca County Workforce Profile*. Office of Economic Advisors, Wisconsin Department of Workforce Development.
- Blum, H.L. (1981): *Health and the Systems Approach* (2<sup>nd</sup> ed.). New York: Human Sciences Press.
- Bookse, B.C., Kindig, D.A., Rohan, A.K., Jovaag, A. & Remington, P.L. (2008). *Opportunities to Make Wisconsin the Healthiest State*. University of Wisconsin Population Health Institute.
- Camponeschi, J. (2008). *The 2008 Burden of Diabetes in Wisconsin*. National Kidney Foundation. National Lions Foundation.
- Economic Development Intelligence System (EDIS). Waupaca County. (2008). (3<sup>rd</sup> quarter report).
- Food Security in the Wisconsin WIC Population*. (2007, January). Nutrition and Physical Activity Section; WIC Program, Bureau of Community Health Promotion, Division of Public Health, Wisconsin Department of Health and Family Services.
- Healthiest Wisconsin 2010: A Partnership Plan to Improve the Health of the Public (2002). Wisconsin Department of Health and Family Services, Division of Public Health.
- Jarvis, T. (2009, January). *Steal These Strategies*. "O" The Oprah Magazine, 147.
- Kindig, D., Stoddart, G. (2003) What is population health? *American Journal of Public Health*, 93, 380-383.
- Kirtland, K.A., Li, Y.F., Geiss, L.S., & Thompson, T.J. (October 31, 2008). State-Specific Incidence of Diabetes Among Adults – Participating States, 1995-1997 and 2005-2007. *Morbidity and Mortality Weekly Report*, 57 (43), 1169-1173.

- Perry, B. (Winter/Spring, 2006). Moving Upstream to Repair the Bridge. *Connections: WCASA's Bi-Annual Educational Journal*, 3-5.
- Stanhope, M. & Lancaster, J. (2000). *Community and Public Health Nursing*. St. Louis, London, Philadelphia, Sydney, Toronto: Mosby.
- Stokes, J. III, Noren J.J., Shindell S. (1982). Definitions of terms and concepts applicable to clinical preventive medicine. *Journal of Community Health*, 8, 33-41.
- Swanson, J. and Nies, M. (2<sup>nd</sup> ed.). (1997). *Community Health Nursing: Promoting the Health of Aggregates*. W. B. Saunders.
- Taylor, K.W., Altens, J.K., Bookse B.C., O'Connor, C.E., Jones, N.R., & Remington, P.L. ( 2008). *Wisconsin County Health Rankings Full Report*. University of Wisconsin Population Health Institute.
- The Burden of Tobacco in Waupaca County*. (2002). A Collaborative Report of the Wisconsin Division of Public Health, the American Cancer Society, the University of Wisconsin Comprehensive Cancer Center, and the Wisconsin Tobacco Control Board.
- Waupaca County, *Wisconsin, Profile of Selected Housing Characteristics*. (2000). American Fact Finder, U.S. Census Bureau.